



**Maffett Loftis Engineering, LLC**

1 South Jefferson Avenue, Suite 101

Cookeville, TN 38501

Tel: (931) 526-5143

[www.maffett-loftis.com](http://www.maffett-loftis.com)

---

**Addendum No. 2**

**February 17, 2025**

**Roaden University Center HVAC Upgrades**

**Tennessee Technological University**

**Cookeville, Putnam County, Tennessee**

**SBC 364/011-03-2023**

The following items take precedence over that previously specified for the referenced project.

**Revisions and Clarifications to the Drawings or to the Project Manual:**

1. The plans have been updated to accurately reflect the location of the outside air louver for AHU-1. Please see the attached revised plan.

Addendum by:

Justin Newell, PE

Maffett Loftis Engineering, LLC

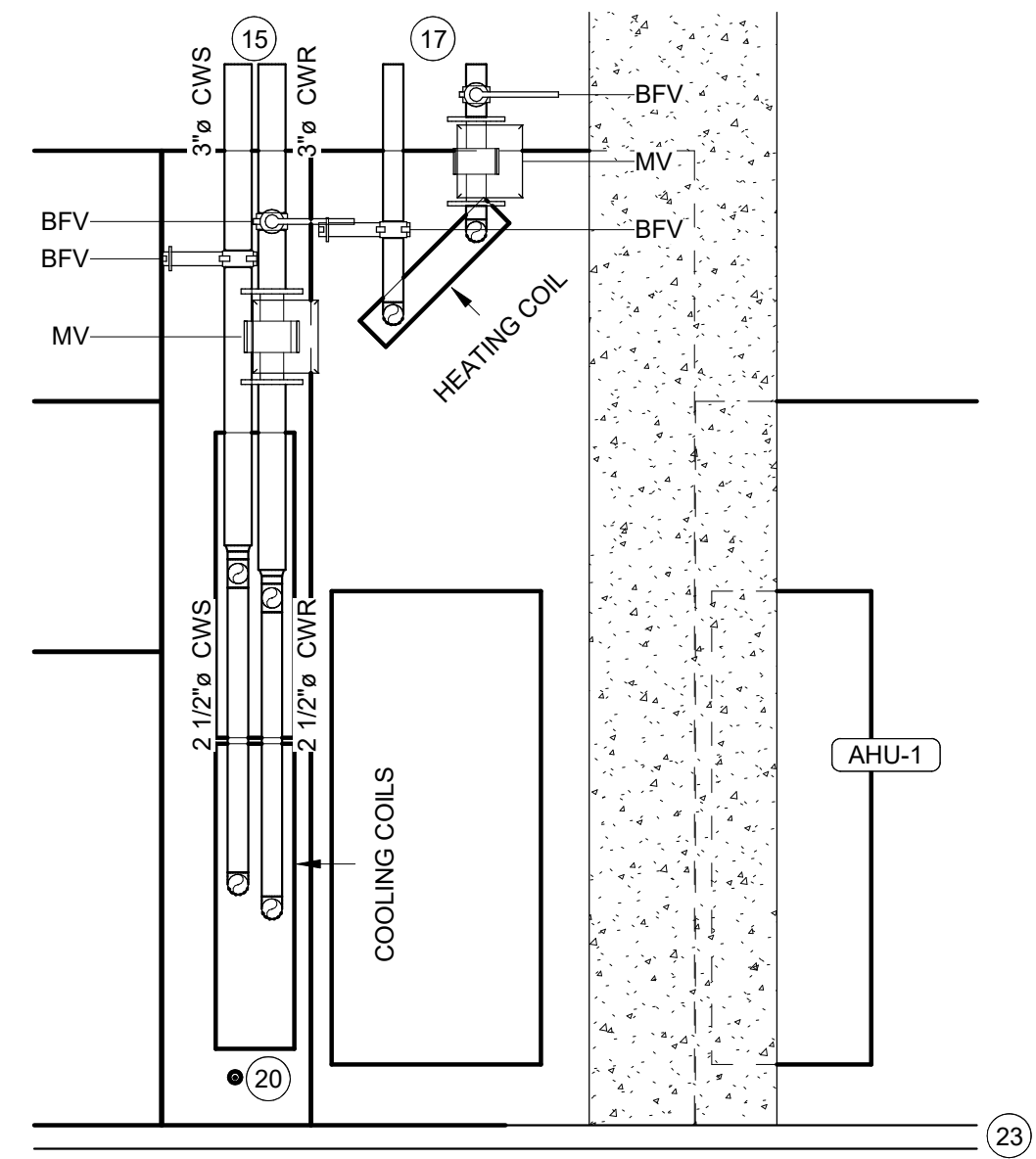


Attachments:

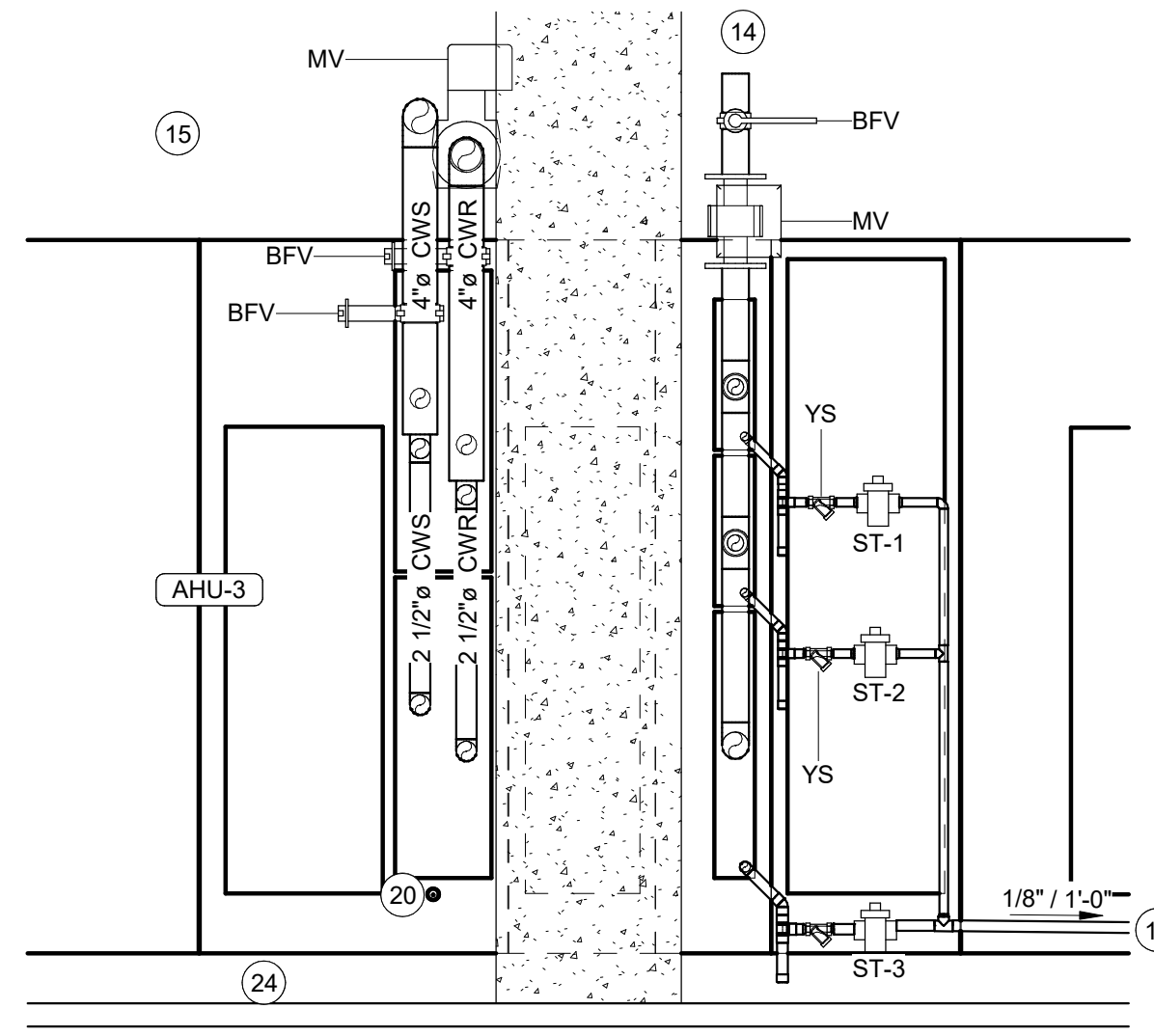
Revised Sheet M1.1

**MECHANICAL LEGEND**

- " x X" A  
XXX CFM
- CONNECTION SIZE
- " x X" A  
XXX CFM
- DIFFUSER / GRILLE CALLOUT
- " x X" A  
XXX CFM
- AIRFLOW IN CFM
- 
- SCHEDULED ITEM LABEL
- 
- SUPPLY DUCT
- 
- RETURN DUCT
- 
- OUTSIDE AIR DUCT
- 
- EXHAUST DUCT
- MV
- MOTOR CONTROL VALVE
- BFV
- BUTTERFLY VALVE
- BV
- BALL VALVE
- YS
- Y-STRAINER



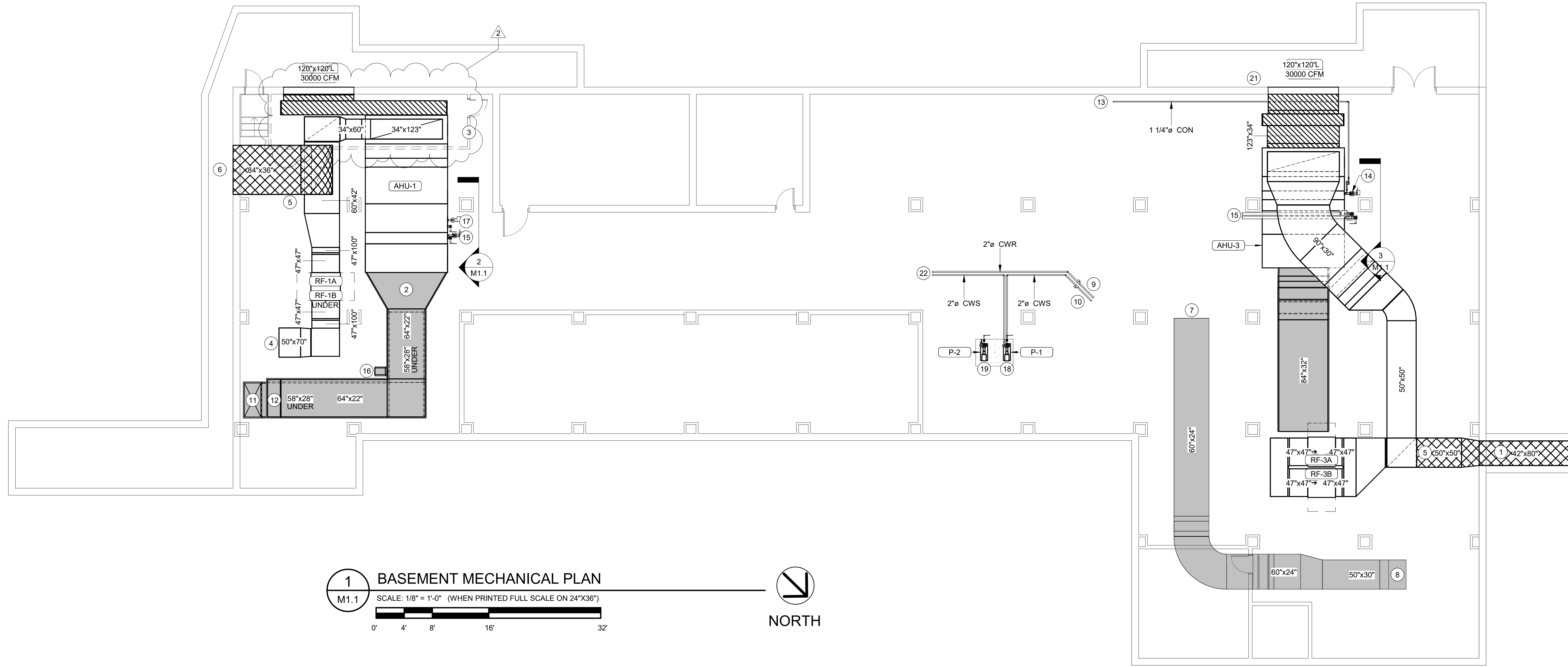
**2 AHU-1 PIPING**  
 M1.1 SCALE: 1/2" = 1'-0" (WHEN PRINTED FULL SCALE ON 24"X36")



**3 AHU-3 PIPING**  
 M1.1 SCALE: 1/2" = 1'-0" (WHEN PRINTED FULL SCALE ON 24"X36")

**# MECHANICAL NOTES**

- NUMBERED NOTES
- 1 EXISTING DUCTWORK. REMOVE EXTRUDING GLYCOL PIPING FROM DUCTWORK AND ABANDON REMAINDER IN PLACE.
  - 2 COLD AIR BELOW. HOT AIR ABOVE
  - 3 DEMO CONCRETE OUTSIDE AIR PLENUM
  - 4 CONNECT TO EXISTING 70"x50" DUCT FROM ABOVE
  - 5 MOTORIZED ECONOMIZER RELIEF AIR DAMPER
  - 6 CONNECT TO EXISTING RELIEF AIR OPENING AND SEAL THE SECOND OPENING
  - 7 TO AHU-2 (NOT IN SCOPE)
  - 8 CLEAN TURNING VANES LOCATED HERE AND DUCTWORK TO AHU-2
  - 9 CONNECT CHILLED WATER RETURN FROM WHICH-WICH (AHU-WW) INTO BUILDING CHILLED WATER RETURN IN THIS APPROXIMATE LOCATION. PROVIDE ISOLATION VALVE.
  - 10 CONNECT SUCTION SIDE OF WHICH-WICH CHILLED WATER CIRCULATOR PUMP INTO BUILDING CHILLED WATER SUPPLY. PROVIDE ISOLATION VALVE.
  - 11 ATTACHED TO EXISTING 58"x28" COLD AIR DUCT FROM ABOVE
  - 12 ATTACHED TO EXISTING 64"x22" HOT AIR DUCT FROM ABOVE
  - 13 ROUTE TO EXISTING STEAM CONDENSATE RETURN UNIT IN THIS GENERAL LOCATION
  - 14 CONNECT TO LOW PRESSURE STEAM LINE
  - 15 DEMO EXISTING CHILLED WATER SUPPLY AND RETURN IN THIS LOCATION. REROUTE AND CONNECT TO AHU CHILLED WATER SUPPLY AND RETURN
  - 16 CONNECT EXISTING MIXING BOX HOT AND COLD CONNECTIONS TO NEW DUCTS AS SHOWN. MATCH EXISTING SIZE
  - 17 CONNECT TO HOT WATER SUPPLY AND RETURN
  - 18 REPLACE WHICH-WICH CHILLED WATER PUMP WITH NEW. SEE PUMP SCHEDULE AND DETAIL FOR ADDITIONAL INFORMATION
  - 19 REPLACE WHICH-WICH HOT WATER PUMP WITH NEW. SEE PUMP SCHEDULE AND DETAIL FOR ADDITIONAL INFORMATION
  - 20 ROUTE TO NEAREST FLOOR DRAIN
  - 21 DEMO EXISTING STEAM PREHEAT COIL AND ASSOCIATED CONNECTIONS
  - 22 TO/FROM WHICH-WICH UNIT
  - 23 4" CONCRETE PAD
  - 24 4" CONCRETE PAD, PLUS 8" I-BEAMS TO ENSURE STEAM DRAIN PIPING HAS REQUIRED ELEVATION



**1 BASEMENT MECHANICAL PLAN**  
 M1.1 SCALE: 1/8" = 1'-0" (WHEN PRINTED FULL SCALE ON 24"X36")

**TTU ROADEN UNIVERSITY CENTER**  
**HVAC UPGRADES**  
**SBC NO. 364/011-03-2023**  
**COOKEVILLE, TN 38501**



Revisions indicated w/ Δ

No.	Date	Description
2	02/19/25	Addendum #2

M1.1	MECHANICAL PLAN	DATE: 01/10/2025
	TITLE:	JOB NO: 23084
SHEET:	DWN BY: AMF	

