



Tennessee
TECH

Who is Tennessee Tech?

- Tech is in the **top public best value universities in Tennessee** and ranks third overall among both private and public universities
- *U.S. News & World Report* ›
 - › **Best National University**
 - › Ranked #135 in Best Public National Universities
 - › Ranked #249 in Best National Universities
 - › Ranked #124 in Social Mobility
- Ranked in top 250 Graduate Schools (Abound ranking)

Tennessee Tech Is...

- Located in Cookeville, TN
- Population: 37,229
- 72 miles from Nashville Airport
- 12,000 students
- Vibrant international student community
- Top 10 Most Affordable College Towns in America



Return On Investment

Tech graduates have the **highest starting salary** of any public university graduates in Tennessee and rank second overall among private and public universities

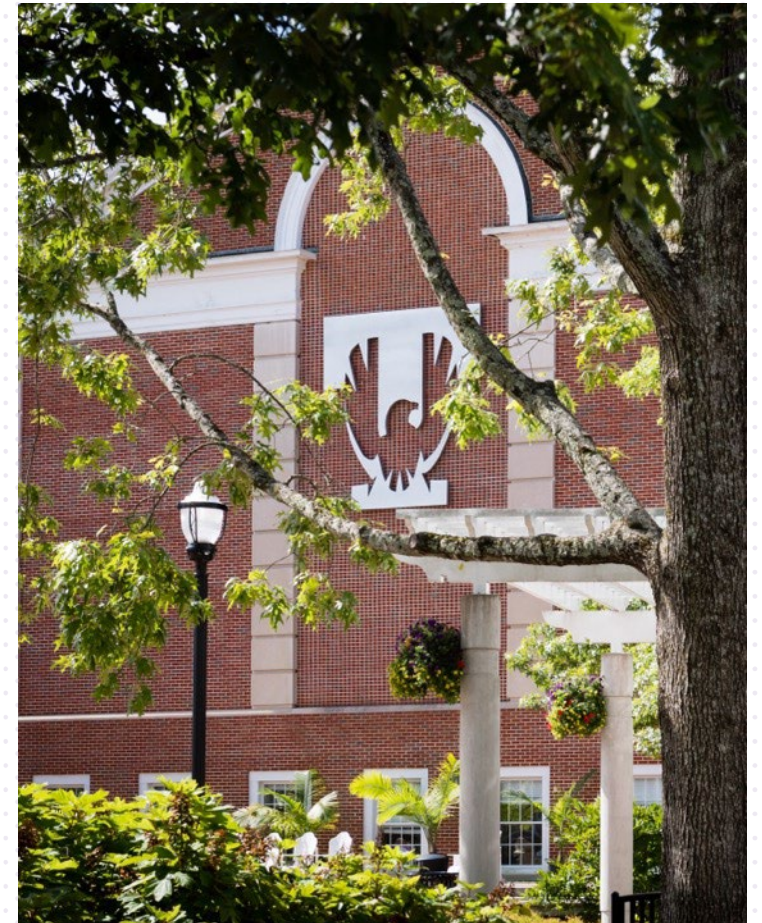




Graduate Degree Programs

Program Overview

- | | |
|--------------------------|--------------------|
| • Focus Areas | 70+ Areas of Focus |
| • Master's Degrees | 21 Major Areas |
| • Educational Specialist | 3 Degree Programs |
| • Graduate Certificate | 25+ Interest Areas |
| • Doctorate | 6 Degree Programs |



How Many Credit Hours?

- Master's: 30 or 33 credit hours
- MBA & MAcc: 30 credit hours
- EdS: 30 credit hours post-Master's
- Certificates: 12-15 credit hours
- Doctorate
 - 46-48 credit hours post-Master's
 - 72-79 credit hours



Graduate Programs – Master's

Master of Science

Biology
Chemistry
Mathematics
Community Health and Nutrition
Chemical Engineering
Civil Engineering
Computer Science
Electrical and Computer Engineering
Mechanical Engineering
Engineering Management
Nursing (MSN)



Graduate Programs –Master's (Continued)

Master of Arts

English

Counseling and Psychology

Curriculum and Instruction

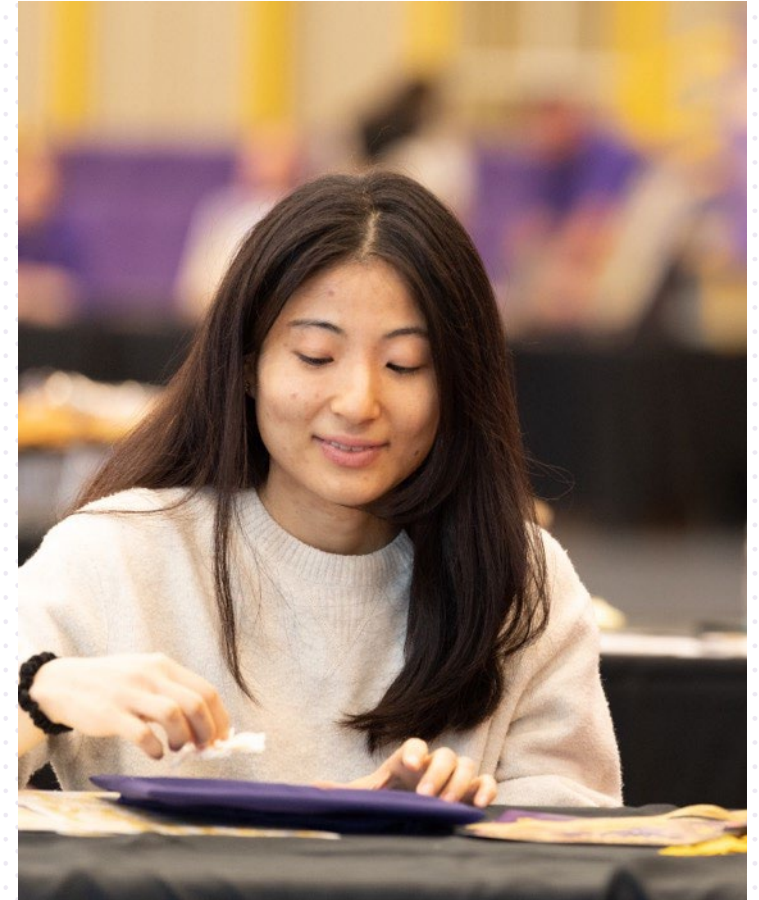
Instructional Leadership

Exercise Science

Learning Design and Technology

Professional Science Masters

Environmental Informatics



Graduate Programs – Master's (Continued)

Master of Business Administration

Business Administration

Master of Accountancy

Accountancy

Master of Professional Studies

HR Leadership

Strategic Leadership

Training and Development

TESOL

Public Safety

Project Management

Healthcare Informatics

Corporate Communication

Media and Strategic Communication



Graduate Certificates

Colleges Offering Certificates

- Business
 - Education
 - Interdisciplinary Studies
 - Nursing (Post Master's)
 - Professional Studies
-
- 12-15 credit hours
 - Credit hours also build toward degree



Specialist in Education

- Counseling and Psychology
- Curriculum and Instruction
- Instructional Leadership



Doctorate

Doctor of Philosophy

Exceptional Learning

Higher Education

Counseling and Supervision

Environmental Science

Engineering

Doctor of Nursing Practice

Nursing Practice



Online Programs

Master of Science

Mechanical Engineering

Community Health and Nutrition

Master of Arts

Exercise Science

Curriculum and Instruction

Learning Design and Technology

Instructional Leadership

Professional Science Masters

Environmental Informatics

Master of Science in Nursing

Nursing



Online Programs (continued)

Master of Professional Studies

Human Resource Leadership

Strategic Leadership

Training and Development

TESOL

Public Safety

Project Management

Healthcare Informatics

Corporate Communication

Media and Strategic Communication



Online Programs (continued)

Master of Business Administration
Business Administration

Master of Accountancy
Accountancy

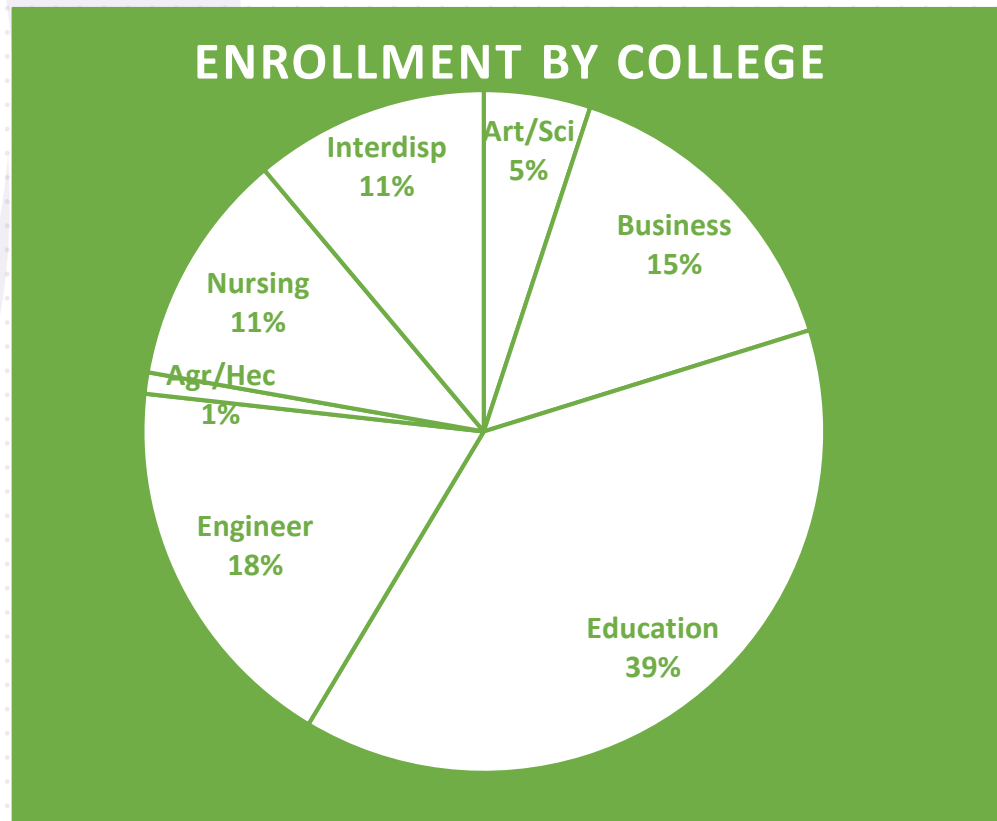
Specialist in Education
Curriculum and Instruction
Instructional Leadership

Doctor of Philosophy
Higher Education

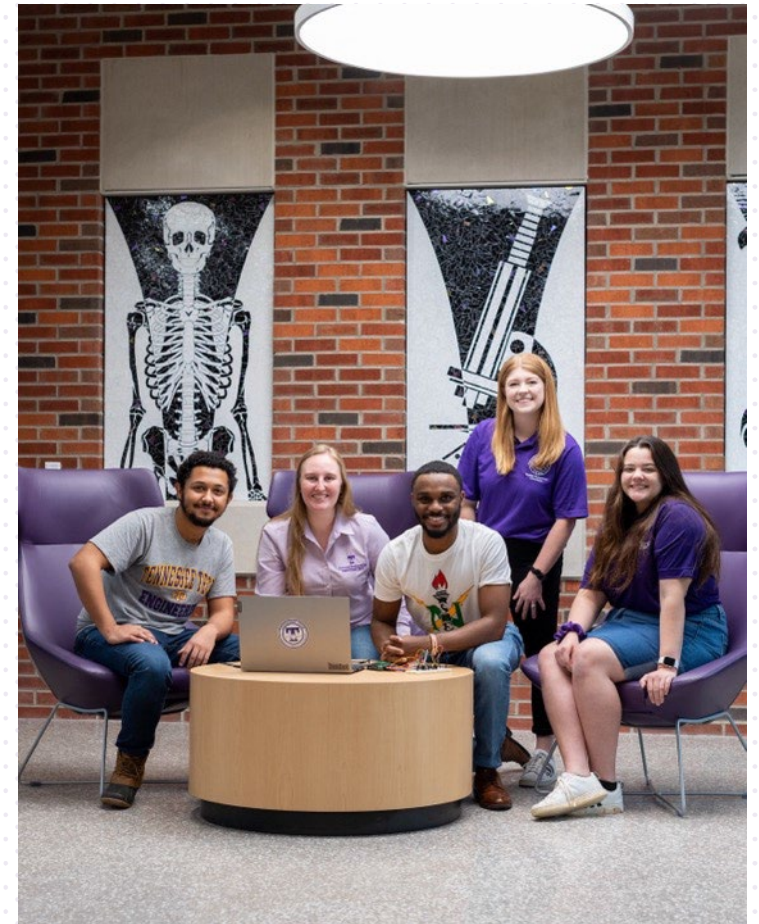
Doctor of Nursing Practice
Nursing Practice



Graduate Enrollment



All Graduate Students: 1,324

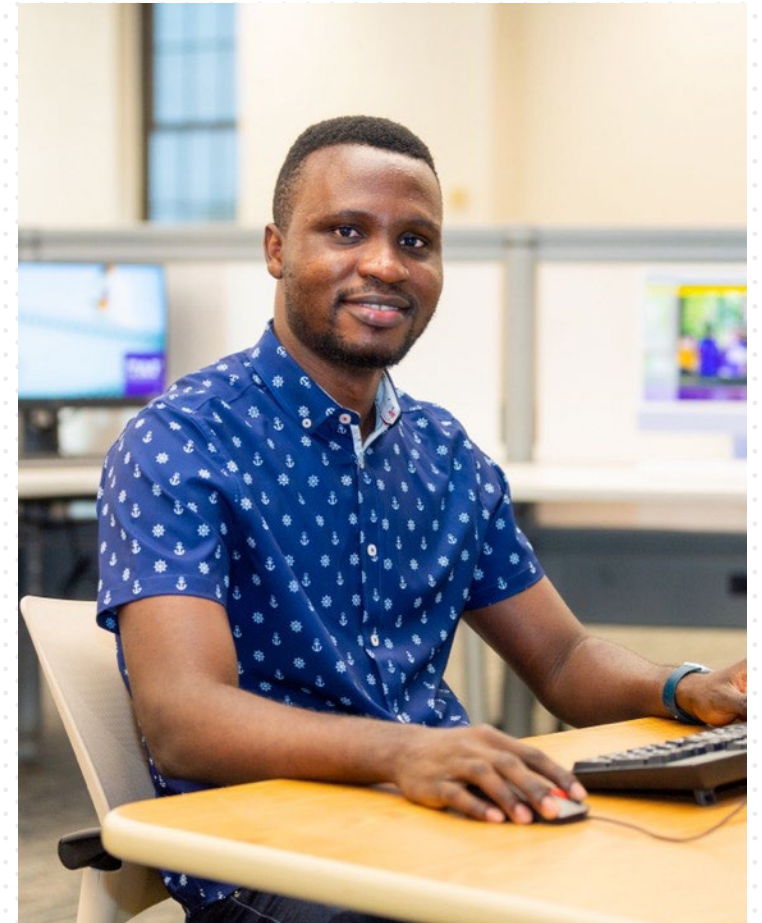


Graduate Assistantships

Highly Competitive

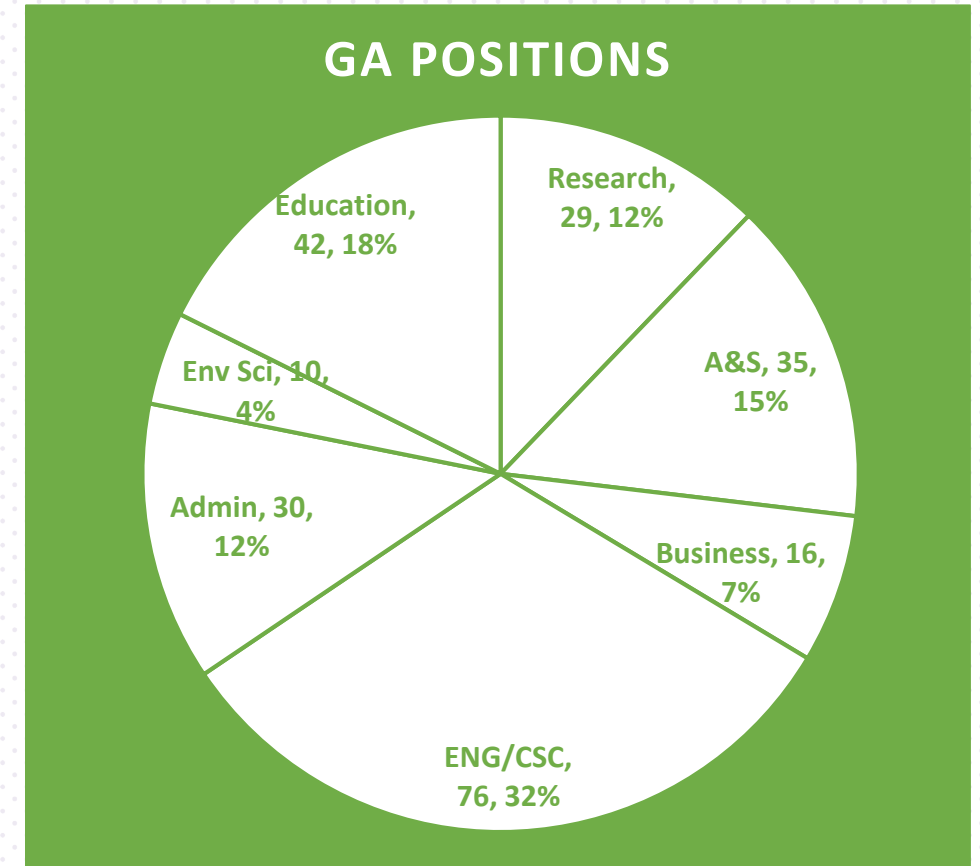
Include coverage of 100% of tuition and maintenance fees

Include monthly stipend for living expenses (\$1,200-\$2,200) depending on degree level and major



Graduate Assistant Funding

- 26% of ALL graduate students receive Graduate Assistantships
- 48% of ALL Full-Time students receive Graduate Assistantships
- Varies by discipline, Engineering, Arts and Sciences, and Education have highest award numbers



Tuition Rates - Domestic

2024-2025 In-State Credit Hour
Rate: \$666 / MBA & MAcc \$803

2024-2025 Out-of-State Credit
Hour Rate: \$806 / MBA & MAcc
\$943

Plus any maintenance and online
fees.

One time application fee of \$35

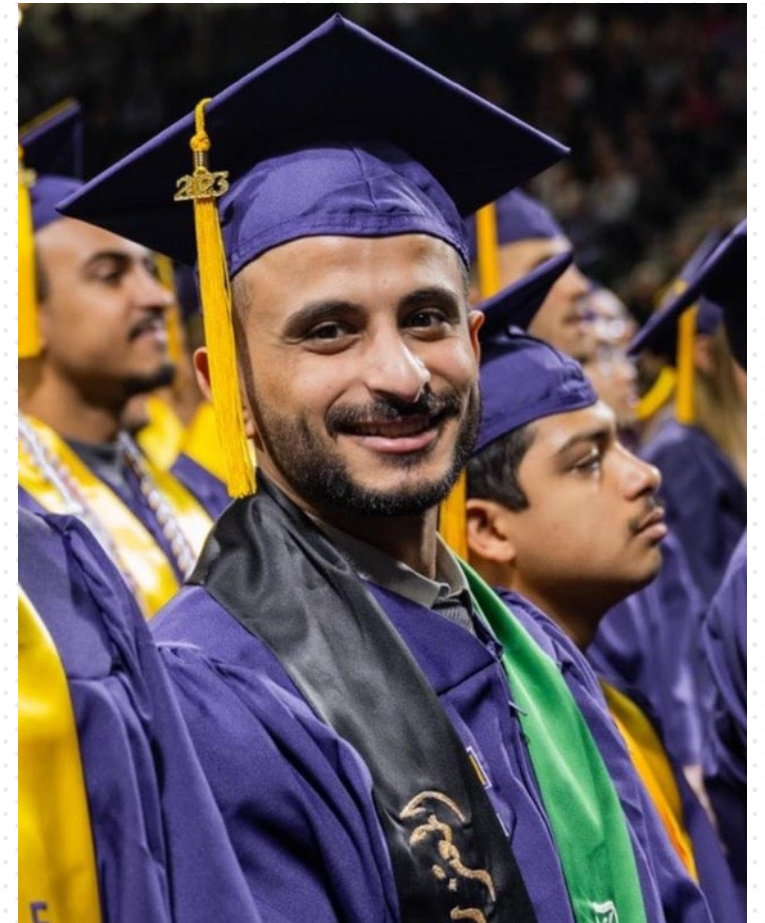


Tuition Rate – International Students

2024-2025 Credit Hour Rate:
\$1,392

2024-2025 MBA & MAcc Credit Hour
Rate: \$1,529

Plus any maintenance and online fees.
One time application fee of \$40



International Admission Requirements

- English Language Proficiency
 - Duolingo = 100
 - IELTS = 6.0
 - ELS = 112
 - PTE Academic = 53
 - TOEFL = 550 Paper based/79 iBT

Check requirements for specific college or department to determine level needed for admissions.



Admission Requirements

Every department defines their admissions requirements. The following are requirements that you *may* be asked to submit:

- Undergraduate GPA
 - Varies by department (3.0-3.25)
- Letters of Recommendation
- Resume/CV
- Statement of Purpose
- GRE or GMAT



Additional Program Information

- Programs may be thesis or non-thesis (varies by department)
- Thesis track includes comprehensive exam and defense
- Must complete program within six years for MS and eight years for PhD
- Must maintain a 3.0 GPA



When Should Students Apply?

Six months prior to the anticipated date of enrollment!

Several programs have specific deadline dates – check the website for those dates!

[College of Graduate Studies - How to Apply \(tntech.edu\)](https://tntech.edu/graduate-studies/how-to-apply)





Questions?

www.tntech.edu/graduatestudies

gradstudies@tntech.edu

