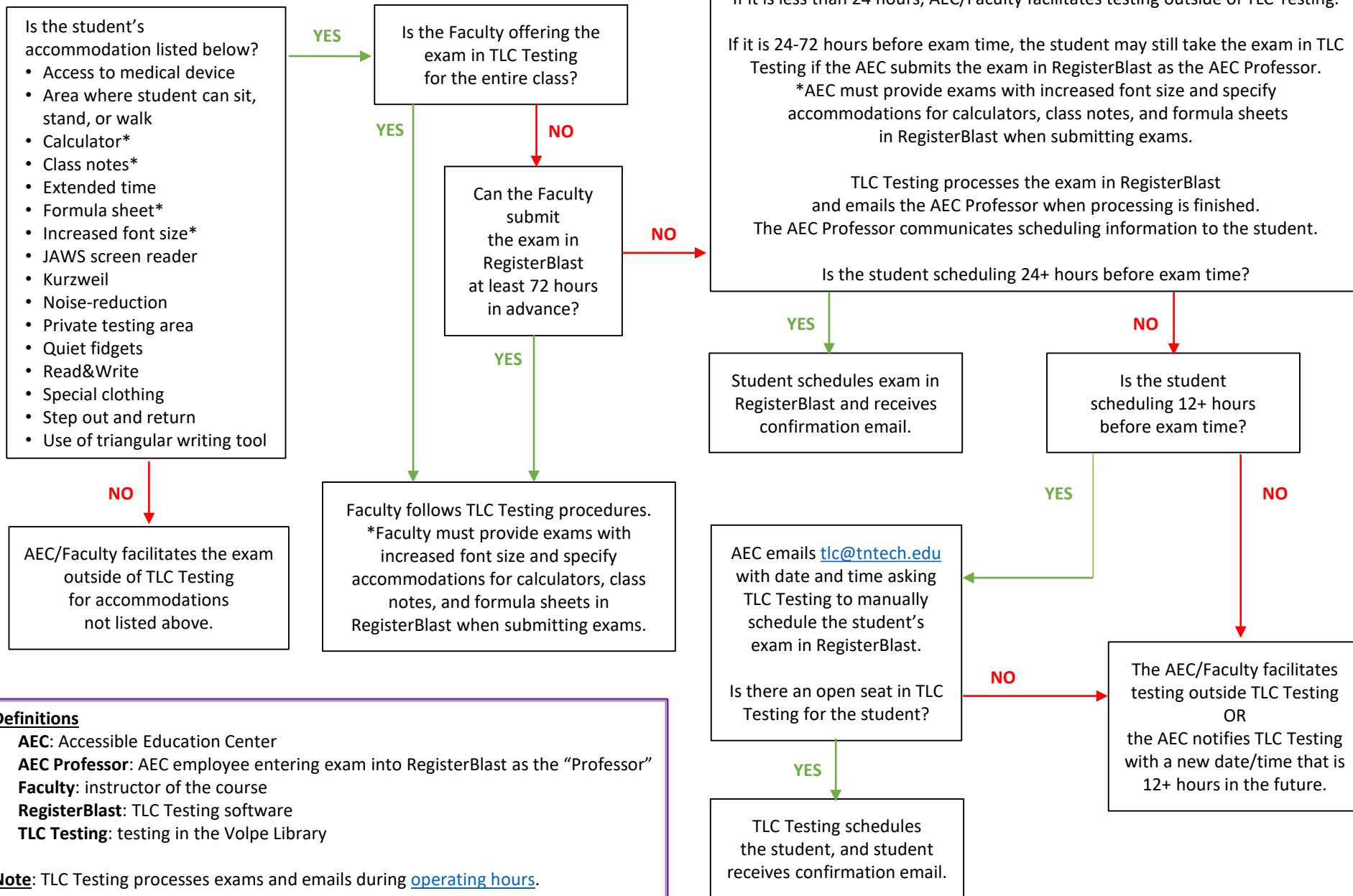


Testing Workflow for Faculty Choosing to Offer an Accommodated Course Exam in the TLC

Faculty members can offer accommodated exams themselves, through the AEC, or in the TLC. Offering accommodated exams in the TLC is at the discretion of the faculty member.

START HERE



Definitions

- **AEC:** Accessible Education Center
- **AEC Professor:** AEC employee entering exam into RegisterBlast as the "Professor"
- **Faculty:** instructor of the course
- **RegisterBlast:** TLC Testing software
- **TLC Testing:** testing in the Volpe Library

Note: TLC Testing processes exams and emails during [operating hours](#).