



Dear Alumni and Friends,

This short holiday vacation is highlighted by a 4 night stay in San Antonio, the Alamo City. The old-Spanish flavor, multi-cultural heritage, numerous parks and plazas, and the Riverwalk make San Antonio one of America's most intriguing cities. Along the San Antonio River is the bustling Riverwalk, or Paseo Del Rio, with tree-lined footpaths, craft shops, galleries, a mall, restaurants and nightspots. The Riverwalk is pedestrian only as it sits below the automobile street level.

A city tour kicks off your San Antonio adventure. Visit the Alamo with time to wander through the historic landmark. Next enjoy the docudrama, "The Price of Freedom," which recounts the battle of the Alamo at the IMAX Theatre. Complete your day with a leisurely Riverwalk Cruise where you'll learn more about the history of this fascinating city.

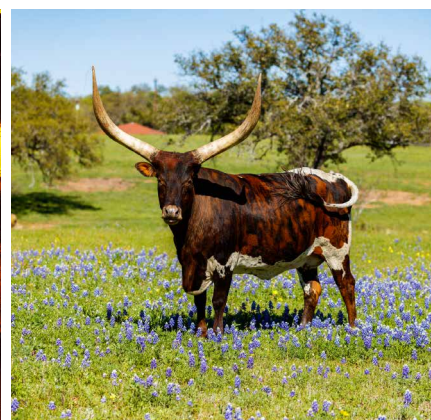
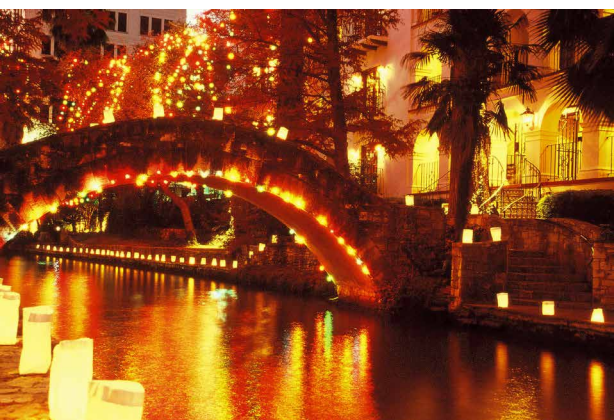
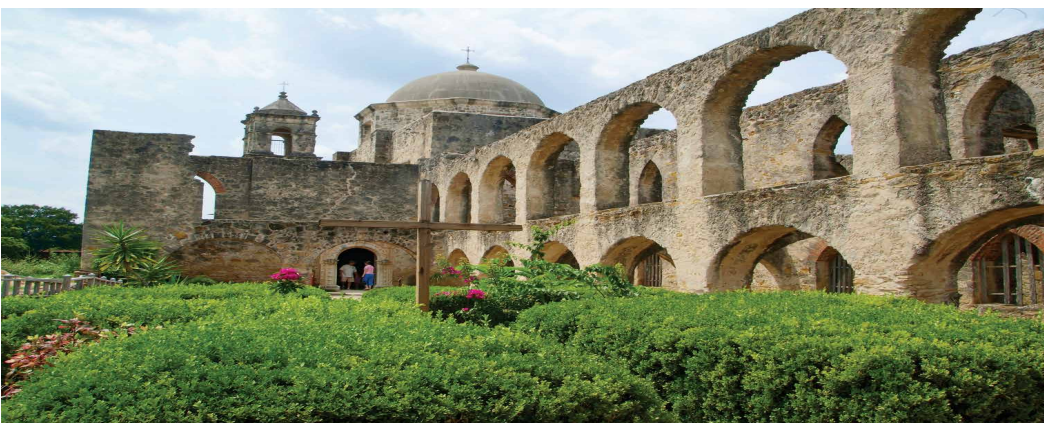
Another exciting day takes you north to the beautiful and unique capital of Texas, Austin, for a city tour and visits to the LBJ Library & Museum at the University of Texas and the State Capitol Building. On Day 4, travel into the Hill Country of Texas and take in the scenery. The first stop is in the quaint and historic German settlement of Fredericksburg. Explore the downtown area and visit the National Museum of the Pacific War. Then sample a few wines of the Texas Hill Country, a growing wine region. On the last evening experience the Fiesta de las Luminarias where thousands of candles illuminate the Riverwalk for the magical holiday season.

Please review the itinerary details and count the extras. With roundtrip airfare included, we hope you can join us and agree this is an amazing trip.

Cheers,

Susan Luna

Susan Luna
Director
Crawford Alumni Center



705 N. Dixie Avenue
Box 5157
Cookeville, TN 38501

CANCELLATION FEES**

TPP is not purchased, are subject to the following per person fees:

- Cancel more than 180 days prior to departure: Full Refund
- Cancel 179-90 days prior to departure: Deposit or TPP* is Retained**
- Cancel 89-60 days prior to departure: 25% of total price
- Cancel 59-30 days prior to departure: 50% of total price
- Cancel 29-15 days prior to departure: 75% of total price
- Cancel 14 days or less prior to departure/no shows: No refunds

**Future Travel Credit issued for Deposit or TPP* value

RESPONSIBILITY

Premier World Tours LLC dba Premier World Discovery (hereafter PWD), whose vouchers are used by respective agents for the passenger in all matters pertaining to hotel accommodations, sightseeing, tours and transportation, hold themselves free of responsibility for any damages occasioned from any cause whatsoever. PWD will not be responsible for any damages or inconvenience caused by late arrivals, departures and change of schedule or other conditions nor will they be responsible for any act, omission, or event during the time the passenger is not on board their conveyance. The passage contract in use by the airline concerned, when issued, shall constitute the sole contract between the airline and the purchaser of this tour/cruise, and/or passenger. PWD does not hold any responsibility for the conduct of any of its members, hotel, motorcoach, cruise line, train, airline or other personnel. PWD reserves the right to decline to accept or retain any person as a member of a tour/cruise at its discretion. PWD &/or its tour Director retain the right to require any participant to withdraw from a tour/cruise at any time, if determined to be in the best interests of health, safety & general welfare of the tour/cruise group or of the individual participant. Arbitration - I/We agree, any and all disputes concerning this contract or any other material concerning the trip, or the trip itself must be resolved exclusively pursuant to binding arbitration in the state of California, pursuant to the then current rules of the American Arbitration Association. Payment of the deposit for this tour/cruise constitutes acceptance of these terms and conditions. CST #2048841-40

IMPORTANT CONDITIONS/NOTES

Itinerary and hotels are subject to change.

AIR NOTE

Air Schedules may not be available until Final Trip Documentation is received. Air seats are assigned by the airline and sometimes not assigned until the day of travel. Air seat changes can only be attempted upon receipt of e-tickets and Final Trip Documentation at which time availability may be limited. If specific seat assignments or airline choice is extremely important to your reservation, we recommend you book land only and make your own air reservations. Please make this adjustment to land only/own air at time of tour reservation.

PREMIER'S TRAVEL PROTECTION PLAN (TPP) \$275 per person
(must purchase with initial deposit)

Part A - Cancellation Waiver provided by PWD

I. Trip Cancellation Waiver (TCW) - Guarantees full refund on all payments, except the Trip Cancellation Waiver Fee itself in case of cancellation up to the time and date of departure due to the passenger's personal illness or death of an immediate family member. Medical/official documentation required.

II. Premier "Any Reason" Cancellation Waiver (ARCW) - Reimburses 75% of the cancellation fees in the form of a future travel credit certificate (FTCC) valid for 1 year, if you cancel more than 48 hours prior to scheduled departure for any reason not eligible for cash refund under the TCW (Part A - I). FTCC is non-transferable, may not be redeemed for cash and does not include any credit for the Trip Cancellation Waiver Fee. **The Trip Cancellation Waiver Fee must be paid for with Initial Deposit and is refundable until 180 days prior to departure.** The Trip Cancellation Waiver does not cover any single supplement charges due to an individual's traveling companion canceling prior to departure. The Trip Cancellation Waiver is non-transferable and valid for each applicant only. The Trip Cancellation Waiver does not cover any services such as airline tickets not purchased through PWD. Cancellations, Refunds & Inquiries under Part A will be handled by PWD. Certain Exclusions and Restrictions apply.

Part B - Post-Departure Travel Protection Plan* provided by USI
Includes coverage for: Trip Interruption (\$1,000); Trip Delay (\$100/Day-Max \$500); Baggage & Personal Effects (\$2,000); Baggage Delay (\$500); Emergency Accident/Sickness/Medical Expense - excess coverage (\$30,000); Emergency Evacuation/Repatriation (\$150,000); Accidental Death & Dismemberment (\$250,000); Non-Insurance and Emergency Travel Assistance Services** (24/7). Claims & Inquiries under Part B will be administered by USI.

For full Part A and Part B plan details visit: premierworlddiscovery.com/TPP
All Benefits described on this page are for general information basis only. There are certain restrictions, exclusions and limitations that apply to all insurance coverages. Plan benefits, limits and provisions may vary by state jurisdiction.

****NO RISK DEPOSIT - NO CHANGE FEES**

Deposits & TPP payments for any Bookings made for this tour are fully refundable until 180 days prior to departure, should your plans change inside of 180 days you can use the full value (Future Travel Credit**) of your Deposit or TPP on a different program as long as you change plans or let us know prior to the Final Payment Due Date.



NTA National Tour Association
USTOA 51 MILLION TRAVELERS ASSISTANCE PROGRAM
ABA AMERICAN BUS ASSOCIATION



Tennessee Tech Crawford Alumni Center
presents

San Antonio Holiday

featuring 4 Nights in San Antonio

5 Days December 4-8, 2025



BOOKING DISCOUNT!

Save \$100 Per Person
\$200 Per Couple*

*See Reservation Info for Booking Discount details

**NO RISK DEPOSIT
NO CHANGE FEES**

Book Now and your Deposit is Risk Free with No Change Fees until Final Payment Due Date!
See Res Form for details**



Daily Itinerary

DAY 1: ARRIVE SAN ANTONIO

Today arrive in San Antonio, the Alamo City, and transfer to your downtown hotel for a four night stay. The city's old-Spanish flavor, multi-cultural heritage, numerous parks and plazas, and the Riverwalk make it one of America's more intriguing cities. The Riverwalk (Paseo Del Rio) is a fabulous loop off the San Antonio River offering tree-lined footpaths, craft shops, galleries, restaurants and nightspots. This evening enjoy a **Welcome Dinner** with your traveling companions.

⊗ (D) Overnight: **San Antonio**

DAY 2: SAN ANTONIO

After breakfast, enjoy a **San Antonio City Tour** featuring many highlights of this great city. Visit the San Jose Mission known as the "Queen of the Missions" and restored to its original design in the 1930s by the WPA (Works Projects Administration). This afternoon go to the IMAX Theatre to see the docudrama "**The Price of Freedom**" which recounts the battle of the Alamo. Later visit the Shrine of Liberty, **the Alamo** where you will see the chapel, one of the most photographed sites in the nation and wander through this historic landmark. Complete your day with a leisurely **Riverwalk Cruise** and learn more about the history of this San Antonio highlight. This evening enjoy dinner on your own along the Riverwalk.

⊗ (B) Overnight: **San Antonio**

DAY 3: AUSTIN CITY TOUR - CAPITOL - LBJ LIBRARY & MUSEUM

Today is a picturesque day as you coach through the Texas rolling hills to Austin, the capital of Texas. Enjoy an **Austin City Tour** with visits to the **Texas State Capitol** and the **LBJ Library & Museum** on the grounds of the University of Texas along with other famous city sites. This evening enjoy dinner on your own at one of San Antonio's outstanding restaurants.

⊗ (B) Overnight: **San Antonio**

DAY 4: LBJ RANCH - FREDERICKSBURG - LUMINARIAS

Today travel to the **Hill Country** and take in the scenery. The first stop will be in the German settlement of **Fredericksburg** which retains touches of Old World Heritage. Visit the **National Museum of the Pacific War**, dedicated to men and women who served under Admiral Chester Nimitz in the Pacific during World War II. Enjoy time on your own in this quaint town to wander the shops and grab a bite to eat. Later experience a **Wine Tasting** at a local winery. The Texas Hill Country is home to over 100 wineries & vineyards, and many produce award winning wines. Wine production in the area began with the early European settlers nearly 200 years ago. Later return to San Antonio to enjoy a **Farewell Dinner** at a popular local restaurant. Then wander the Riverwalk to experience the **Fiesta de las Luminarias**, which features thousands of candles illuminating the Riverwalk.

⊗ (B,D) Overnight: **San Antonio**

DAY 5: FLIGHT HOME

This morning transfer to the airport for your flight home filled with many pleasant memories of your San Antonio Holiday Tour.

⊗ (B)

Reservation Information

DEPOSIT & FINAL PAYMENT

Deposit of \$400 per person is due with Reservation Form to secure reservations. Final Payment Due Date is 90 days prior to departure.

*BOOKING DISCOUNT

Make your **Final Payment by check** prior to the Final Payment Due Date & receive **\$200 per couple/\$100 per person Booking Discount!**

- Initial Deposit can be made by check or credit card to be eligible.
- Payments after Initial Deposit are considered part of Final Payment & must be made by check.

ONLINE BOOKING OPTION - Save time, postage & secure your seat for this group departure.

Simply type <https://res.premierworlddiscovery.com> into your web browser & use the Booking Number (Web Code) from this flyer to make your Deposit online in just a few minutes. No need to submit a Reservation Form if booking online.

Reservation Form

San Antonio Holiday
December 4-8, 2025

Booking #184639 (Web Code)

Make Checks Payable to:

Premier World Discovery

Fax, Mail or Email Form to:

Tennessee Tech Alumni

c/o Premier World Discovery

1650 So. Pacific Coast Hwy., Suite 202

Redondo Beach, CA 90277

Phone: 877.953.8687 Fax: 310.372.0637

Website: <https://res.premierworlddiscovery.com>

Alumni Website: tntech.edu/goldeneagletravel

Enclosed find a Deposit in the amount of \$ _____ (\$400 per person) to secure reservations for _____ # of people.

Premier's Travel Protection Plan (TPP): (TPP must be purchased with initial deposit)

Yes, I (we) wish to purchase travel protection (TPP) No, I (we) decline travel protection (TPP)

Enclosed find payment in the amount of \$ _____ (\$275 per person) to secure the Premier's Travel Protection Plan (TPP).

Total Payment \$ _____

RT AIR GATEWAY _____ ROOMMATE'S RT AIR GATEWAY _____

see tour details panel for included group RT air gateway/departure city, additional charges apply for other RT air gateways

To avoid change fees, submit full legal names as they appear on government issued ID used for travel (REAL ID/PASSPORT)

Legal Name _____ DOB (MM/DD/YY) _____ Gender M F

Roommate's Legal Name _____ DOB (MM/DD/YY) _____ Gender M F

Your Address _____ Check if Roommate's address is the same

City _____ State _____ ZIP _____

Tel # _____ Mbl # _____

Email Address _____

Emergency Contact/Tel # _____

Badge Name(s) _____

Cardholder Name (if paying by credit card) _____

Amount to be charged \$ _____ VISA MasterCard DISCOVER AMERICAN EXPRESS

Credit Card #: _____ Exp. Date: ____/____/____ CVV# _____

Cardholder Billing Address: Check if address is the same as above _____

Signature Required _____ Today's Date: _____
(for credit card use & acceptance of terms*)

*I (We) agree to pay according to the credit card issuer agreement. I understand and accept the cancellation fees/policy and other terms.

5 Days December 4-8, 2025

Highlights

- San Antonio City Tour
- Alamo
- Riverwalk Cruise
- IMAX Theatre & San Jose Mission
- Hill Country
- Austin City Tour
- Texas State Capitol
- LBJ Library & Museum at UT
- Fredericksburg
- Wine Tasting in Hill Country
- Nat'l Museum of the Pacific War
- Fiesta de las Luminarias
- 4 Nights at One Hotel

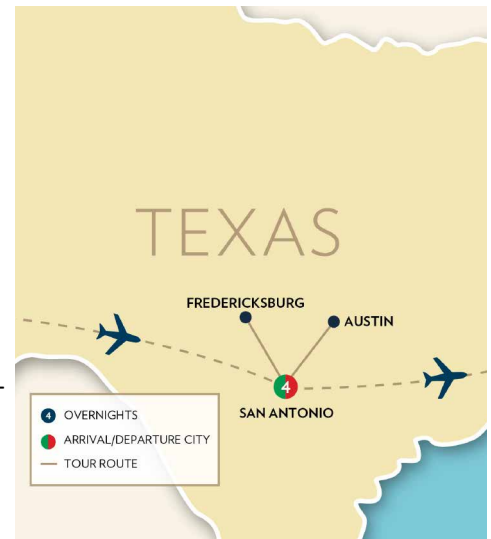
Inclusions

- Roundtrip Airfare - ATL/BNA/MEM/TYS/CHA**
- 6 Meals: 4-Breakfasts & 2-Dinners
- Two Beer & Wine Receptions
- Professional Tour Director
- Sightseeing per Itinerary
- Motorcoach Transportation
- Hotel Transfers
- Baggage Handling at Hotels
- 4 Nights First Class Hotel

Accommodations

- 4 Nights - Holiday Inn Riverwalk, Drury Inn Riverwalk, Westin Riverwalk or Sheraton Gunther, San Antonio

On some dates alternate hotels may be used



Tour Rates

Booking Discount*: **\$3025** pp dbl - ATL/BNA/MEM/TYS/CHA
Regular Rate: **\$3125** pp dbl - ATL/BNA/MEM/TYS/CHA
Single Supplement: **+\$700**

*See Reservation Info for Booking Discount details



**Other gateways are available. For more information and pricing, please call Premier World Discovery at 877-953-8687.